



KABA

Contatto a chiave - key contact
Contact a clef Schlüsselschalter - Contacto de llave



Flush
version



Low Profile
version

Manuale di Installazione
Installation manual / Notice technique
Installationshandbuch / Manual de Instalación

V. 1.2

		FLUSH version	LOW PROFILE version
	A	✓	✓
	B1	✓	
	B2		✓
	C	✓	✓
	D	✓	✓
	E	✓	✓
	F	✓	✓
	G	✓	✓
	H	✓ *	
	L	✓	✓

* Solo Var.5 (luminoso)
Var. 5 only (luminous)

1

Var. 1-2 Var. 3 Var. 4-5

E = Estrazione / Extraction / Retrait / Abzüge / Extracción

Estrarre la chiave nella posizione E1 e verificare la seconda estrazione (E2)
Extract key in the E1 position and check the second extraction (E2)
Enlever la clé dans la position E1 et vérifier la deuxième extraction (E2)
Schlüssel in der Position E1 abziehen und zweiten Abzug E2 kontrollieren
Extraer la llave en la posición E1 y averiguar la segunda extracción (E2)

2

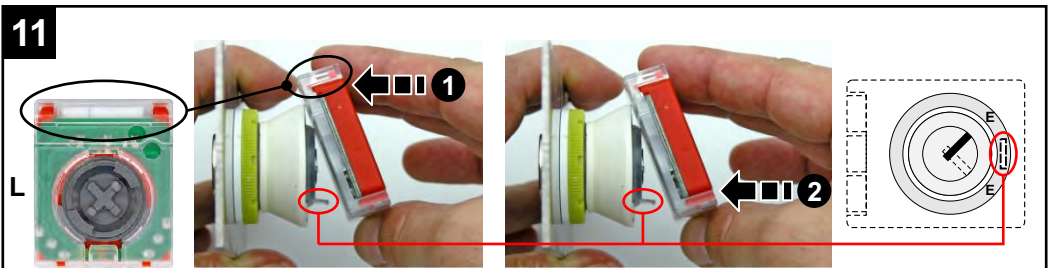
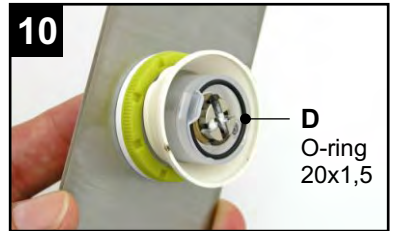
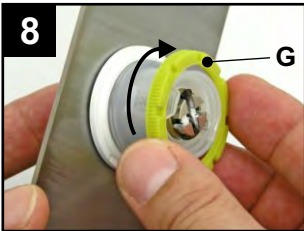
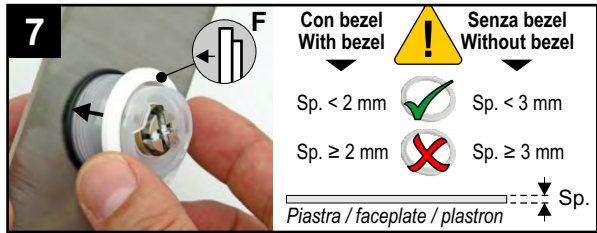
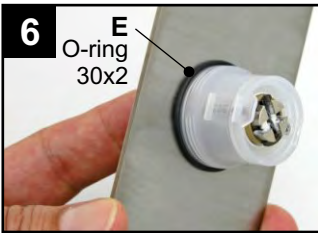
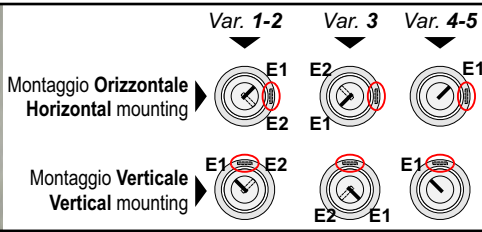
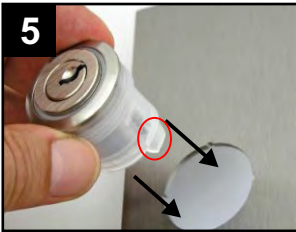
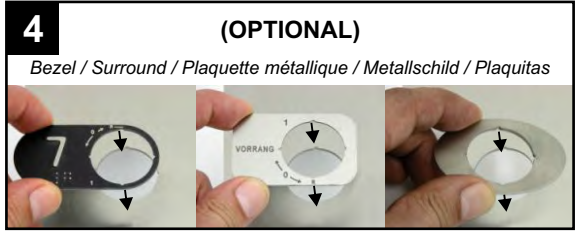
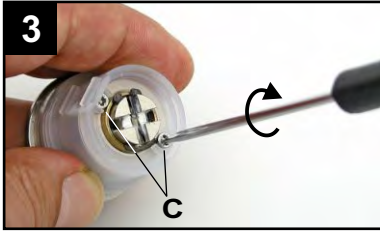
B1/B2

back view

Var. 1-2 Var. 3 Var. 4-5

E = Estrazione / Extraction / Retrait / Abzüge / Extracción

Inserire il cilindro (A) nel corpo filettato (B1/B2) rispettando lo schema in figura
Insert the cylinder (A) in the body (B1/B2) as in the figure
Insérer le cylindre (A) dans le corps (B1/B2) respectant le schéma
Zylinder (A) im geschnittenen Körper (B1/B2) einstecken. Zeichnung folgen und beachten
Insertar el cilindro (A) en el cuerpo fileteado (B1/B2) respetando el esquema en figura





Consultare il manuale "**Precauzioni d'uso e sicurezza**"
Refer to the "**Safety and usage precautions**" manual
Consulter manuel technique "**Precautions de securite et d'emploi**"
Handbuch lesen "**Sicherheits- und Gebrauchsanweisung**"
Consulte el manual "**Precaucioned de seguridad**"



www.dmg.it



DMG SpA

Via delle Monachelle, 84/C
00040 POMEZIA (ROMA) • ITALIA
Tel. +39 06930251 • Fax +39 0693025240
info@dmg.it • www.dmg.it



93010140